

# How to Capture Total Syslog about 3G USB Modem with Vigor Router?

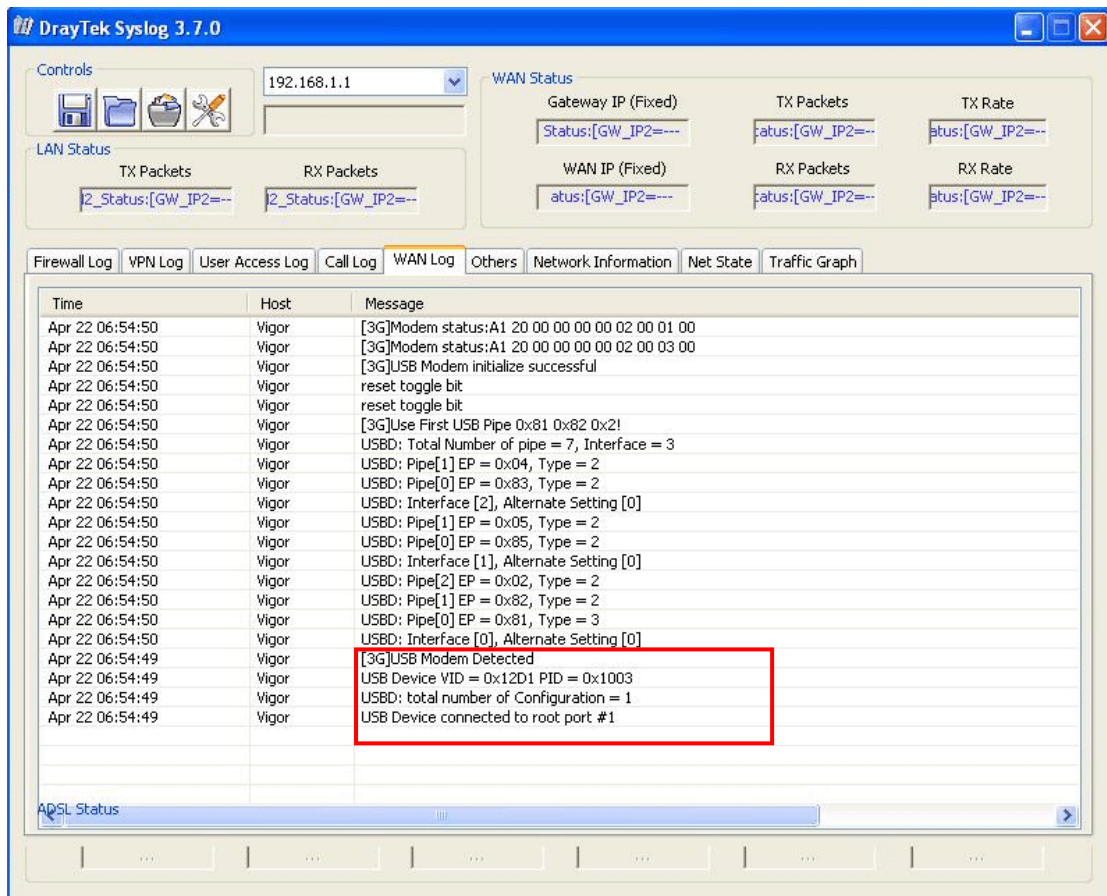
1. Open the syslog utility first.
2. Plug the modem to the router. You can see the USB data in WAN log tag from syslog. Most important of all, this log should include the USB initial information, e.g., as shown below:

USB Device connect to root port #1

USBD: total number of configuration=1

USB Device VID= 0X12D1 PID :0X1003

.....



- If the USB modem is compatible with vigor router and connection is established, you can see WAN2 IP finally (e.g., 116.59.250.89).

